

# Hanover

Conditioned living area: 3,190 SF



*A Traditional Style home with a floor plan to suit modern lifestyles.*

## Features:

*The Kitchen integrates the adjacent Great Room and Breakfast areas to facilitate flow between rooms when entertaining.*

*Formal Dining Room with tray ceiling and furniture niche.*

*Living Room/Study with built-ins.*

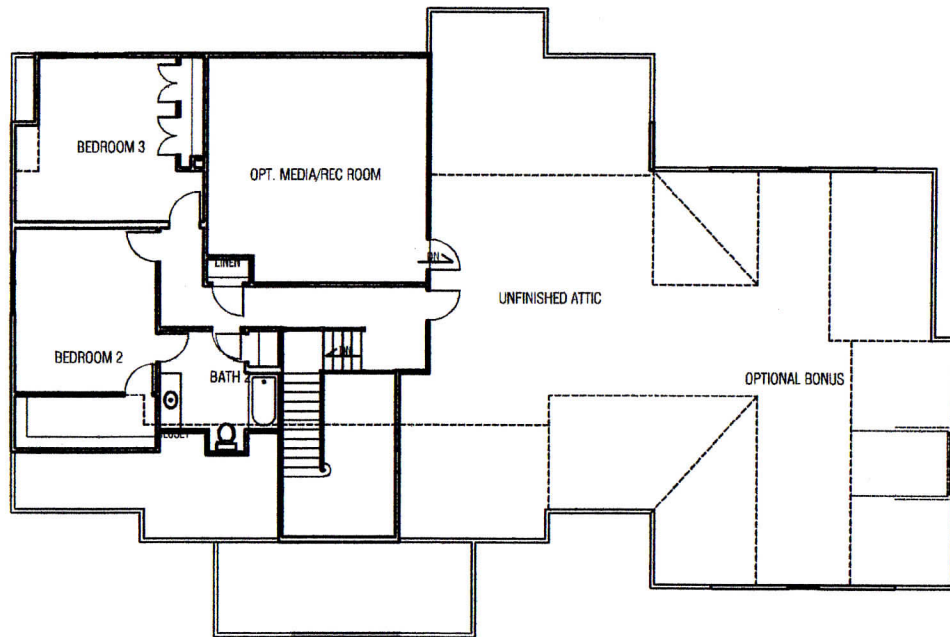
*Spacious Master Suite with large His/Her Closets.*

*The Home Task Center provides space for laundry chores and home administrative tasks.*

Width	83'-4"
Depth	62'-0"
First Floor	2411 SF
Second Floor	779 SF
Deck	324 SF
Garage and Storage	980 SF



**CHARLES ROSS HOMES**  
Designers & Builders of Fine Homes

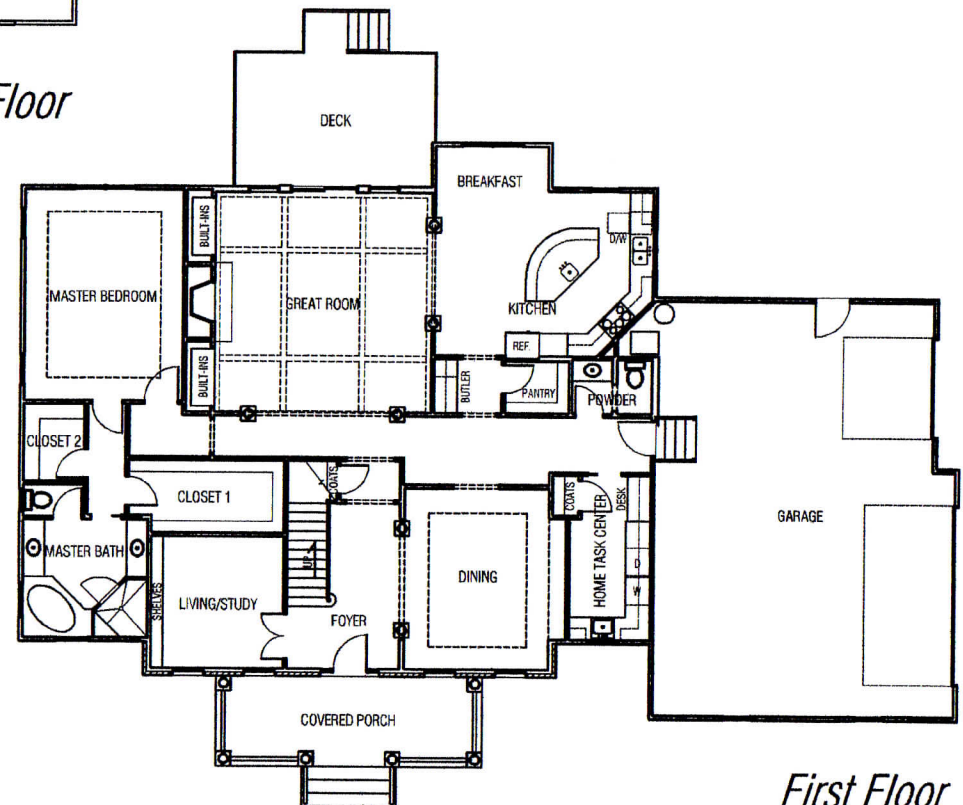


*Second Floor*

Width 83'-4"  
 Depth 62'-0"  
 First Floor 2411 SF  
 Second Floor 779 SF  
 Deck 324 SF  
 Garage and Storage 980 SF



**CHARLES ROSS HOMES**  
 Designers & Builders of Fine Homes



*First Floor*