

Hanover II

Conditioned living area: 3,190 SF

A version of our "Hanover" Model Plan
with a 2-car Garage

Features:

The Kitchen integrates the adjacent Great Room and Breakfast areas to facilitate flow between rooms when entertaining.

Formal Dining Room with tray ceiling and furniture niche.

Living Room/Study with built-ins.

Spacious Master Suite with large His/Her Closets.

The Home Task Center provides space for laundry chores and home administrative tasks.



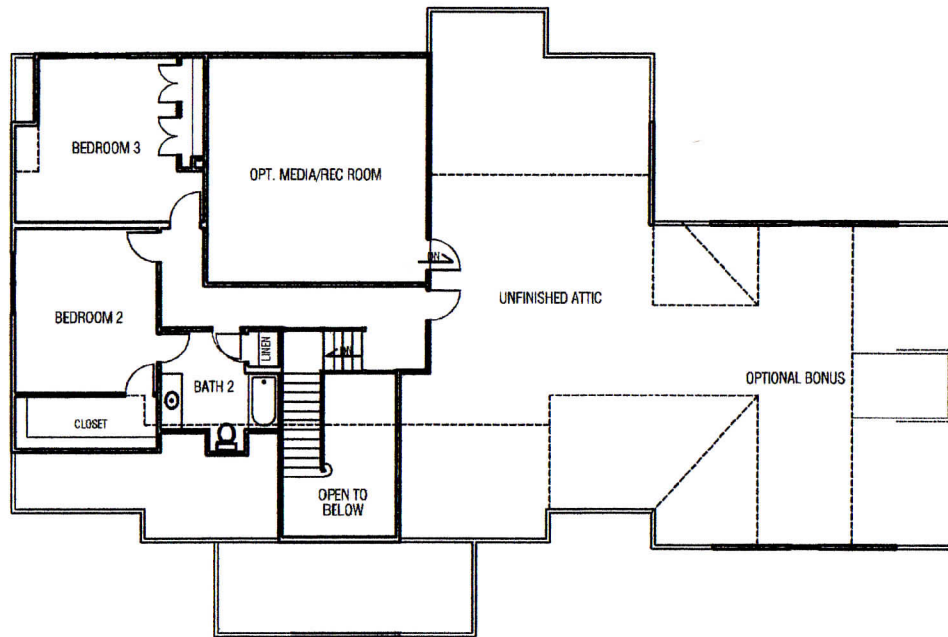
A Traditional Style home with a floor plan to suit modern lifestyles.



CHARLES ROSS HOMES
Designers & Builders of Fine Homes

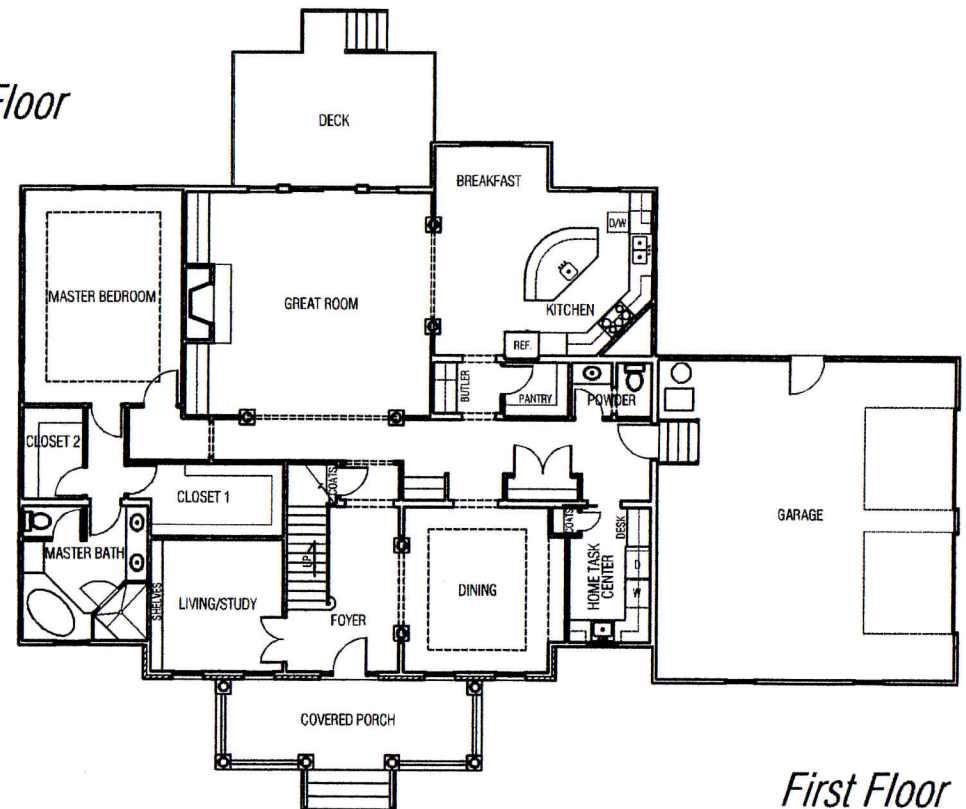
Width	83'-4"
Depth	62'-0"
First Floor	2411 SF
Second Floor	779 SF
Deck	324 SF
Garage and Storage	782 SF

Copyright ©2010 Charles Ross Homes



Second Floor

Width 83'-4"
 Depth 62'-0"
 First Floor 2411 SF
 Second Floor 779 SF
 Deck 324 SF
 Garage and Storage 782 SF



First Floor



CHARLES ROSS HOMES
 Designers & Builders of Fine Homes