

# Sarah's Creek Cottage

Conditioned living area: 3,123 SF



*A coastal southern cottage well suited for properties with views at the rear.*

## *Features:*

*The spacious, open Kitchen integrates with the adjoining Dining Room and Great Room; the large island encourages guests to socialize with the chef.*

*Large walk-in Pantry.*

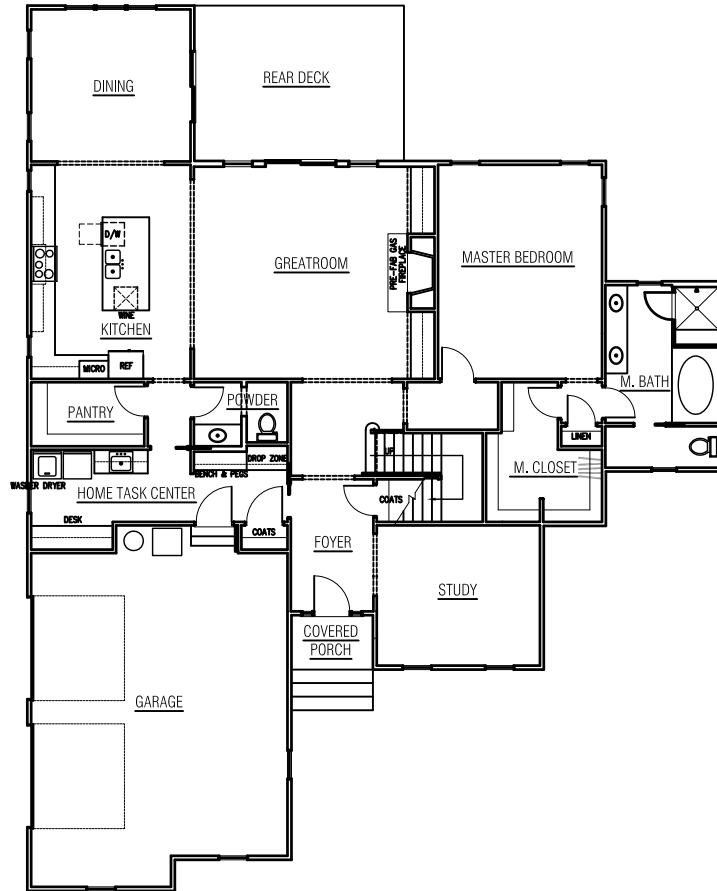
*The Home Task Center helps to keep the home organized. It includes a desk as well as a bench and pegs and a drop zone for keys and electronic gear.*

*1st floor Master Suite features a generous size bath and closet.*

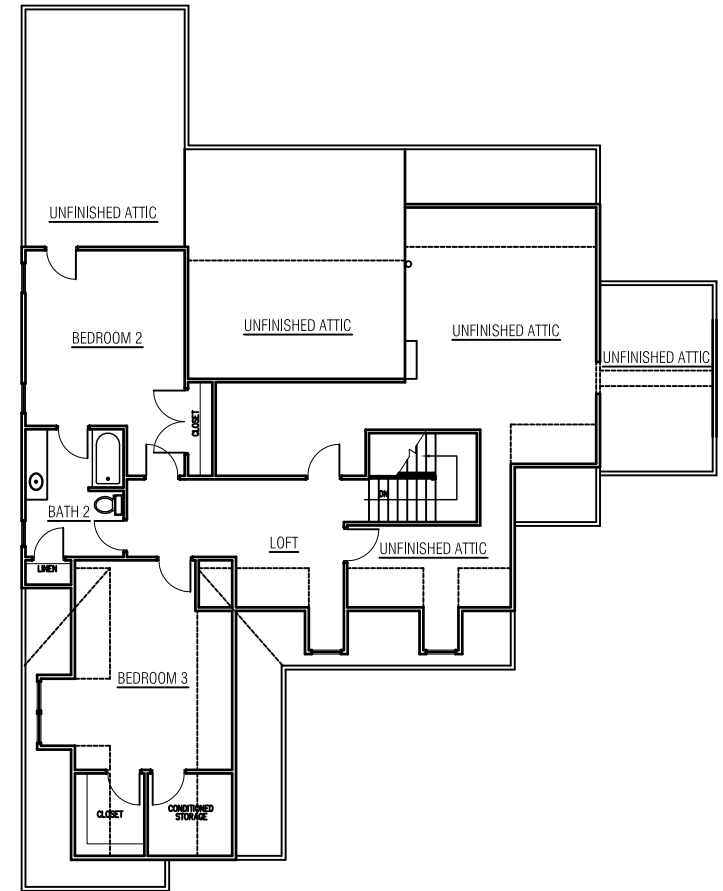
Width	59'-8"
Depth	76'-0"
First Floor	2,175 SF
Second Floor	948 SF
Garage	653 SF



**CHARLES ROSS HOMES**  
Designers & Builders of Fine Homes



*First Floor*



*Second Floor*

*Note: Plan and Elevation may be mirrored from that shown depending on the lot on which it is constructed.*