

Fairfax Court

Conditioned living area: 4,221 SF

An elegant all-brick transitional style home designed for a narrow lot.

Features:

Library/Study convenient to the Foyer is a wonderful place to welcome guests.

The Kitchen's two islands provide ample workspace for multiple cooks. Guests can interact with the chef from the comfort of the adjoining Keeping Room.

Ample Master Suite with separate walk-in closets.

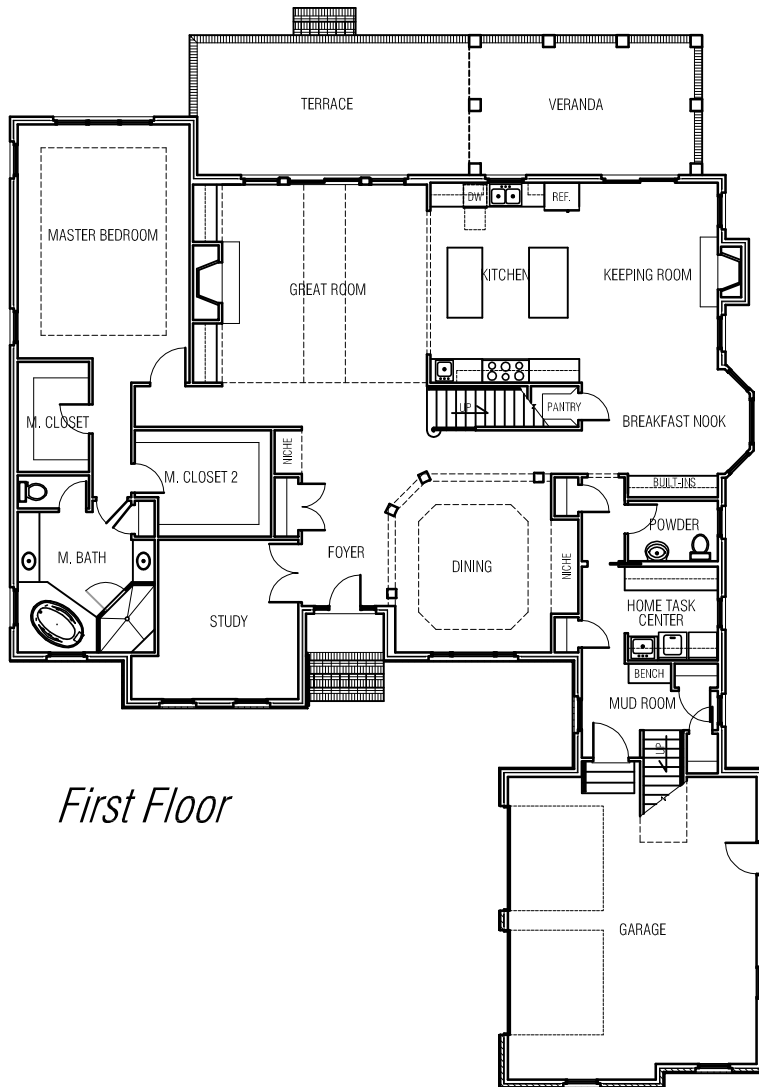
Loft overlooking the Great Room is a delightful reading spot with wonderful interior and exterior views.

The large Home Task Center is a convenient place for laundry, crafts, and home administration tasks.

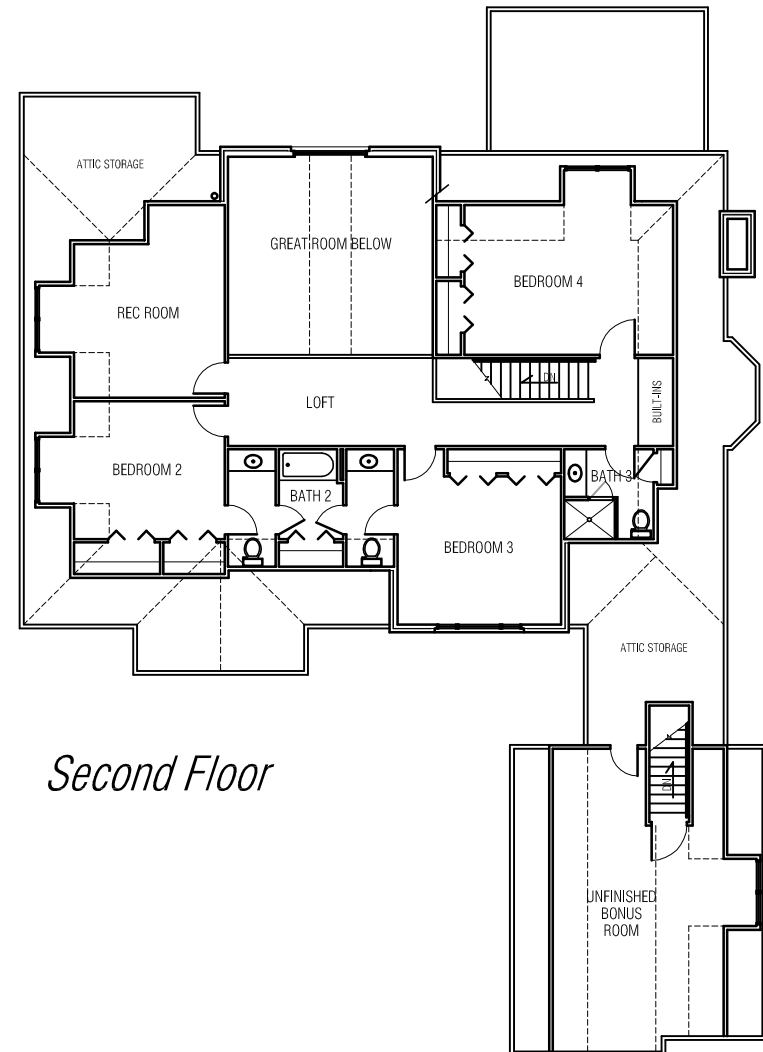


CHARLES ROSS HOMES
Designers & Builders of Fine Homes

Width	64'-11"
Depth	90'-6"
First Floor	2754 SF
Second Floor	1467 SF
Unfinished Bonus Room	357 SF
Screen Porch	208 SF
Terrace	297 SF
Garage	581 SF



First Floor



Second Floor



CHARLES ROSS HOMES
Designers & Builders of Fine Homes