

# Kensington Court

*Conditioned living area: 4,563 SF*



*Brick and cast stone accents are combined to produce an elegant exterior inspired by both Georgian and Colonial Revival styles.*

## *Features:*

*Formal Study/Living Room with beamed ceiling convenient to Foyer.*

*Gourmet Kitchen with walk-in pantry features two islands adjoining Keeping Room with fireplace.*

*Large Butler Pantry and wine refrigerator convenient to Kitchen and Dining Room.*

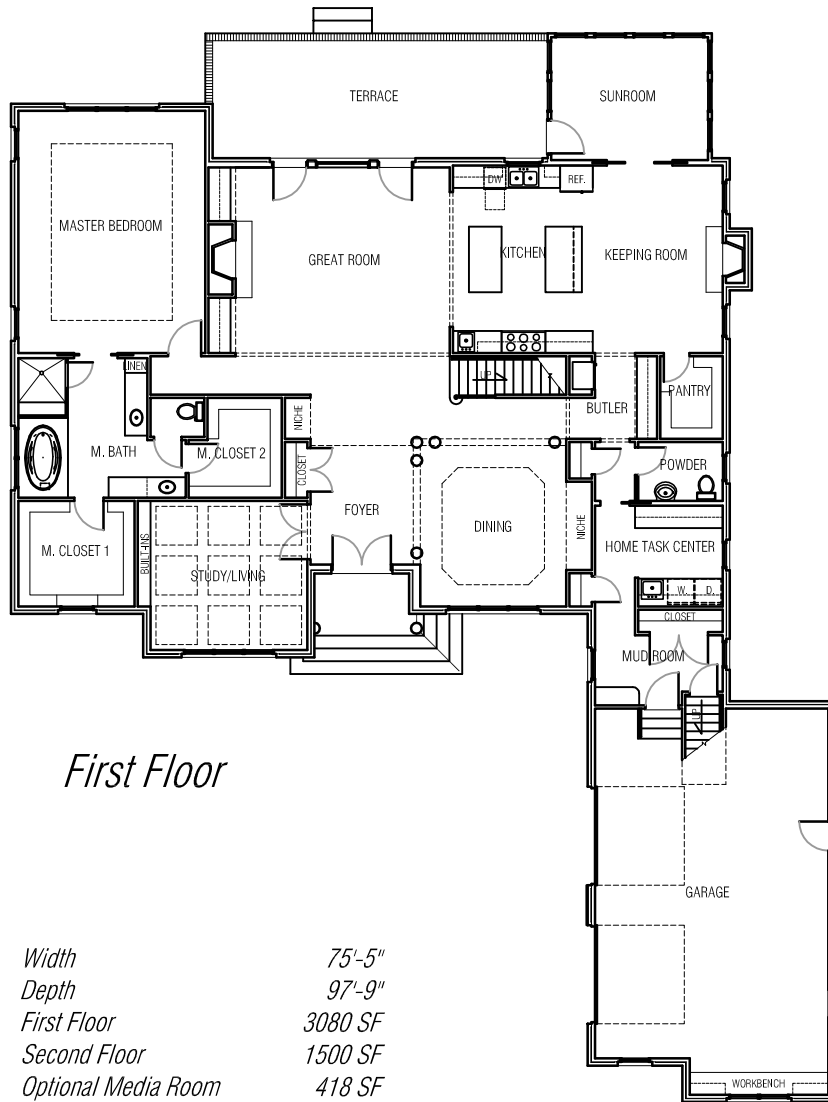
*Master Suite with two large walk-in closets.*

*Conveniently located Home Task Center provides an area for home administration, crafts and laundry.*



**CHARLES ROSS HOMES**  
Designers & Builders of Fine Homes

<i>Width</i>	<i>75'-5"</i>
<i>Depth</i>	<i>97'-9"</i>
<i>First Floor</i>	<i>3080 SF</i>
<i>Second Floor</i>	<i>1500 SF</i>
<i>Optional Media Room</i>	<i>418 SF</i>
<i>Terrace</i>	<i>354 SF</i>
<i>Garage</i>	<i>759 SF</i>



*First Floor*



*Second Floor*

Width	75'-5"
Depth	97'-9"
First Floor	3080 SF
Second Floor	1500 SF
Optional Media Room	418 SF
Terrace	354 SF
Garage	759 SF



**CHARLES ROSS HOMES**  
Designers & Builders of Fine Homes

Copyright ©2005 Charles W. Ross, Builder, Inc.