

# Mill Pond Cottage

*Conditioned living area: 2,646 SF*



*A combination of natural stone, Hardie Plank siding and shakes create the warm and welcoming exterior of this cottage-style home.*

## *Features:*

*Vaulted Living/Dining Room allows for flexible furniture layout and enjoyment of the stone fireplace from both areas.*

*Efficiently arranged Kitchen with center island.*

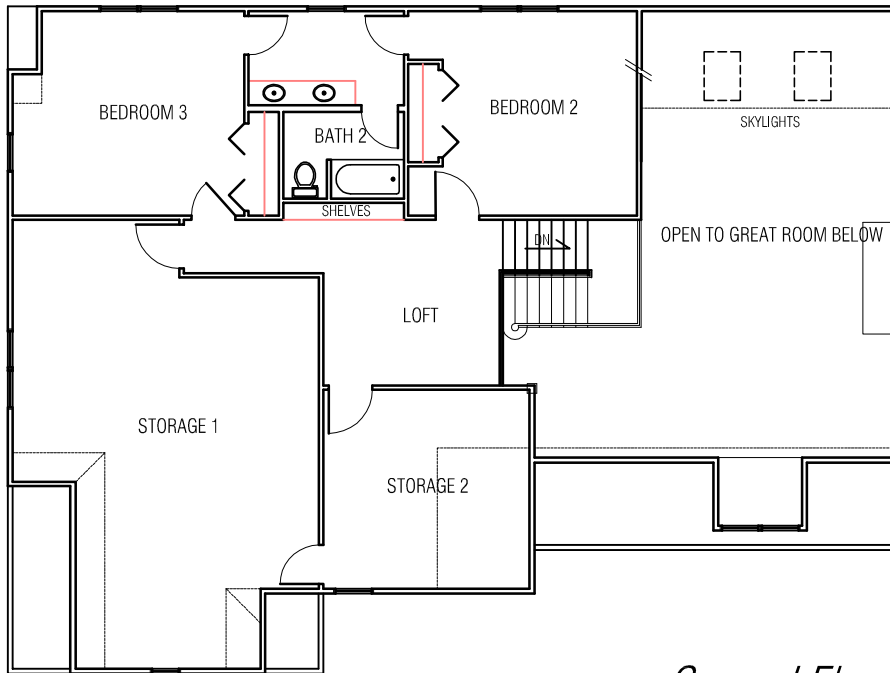
*Master Suite with large walk-in closet.*

*Centrally located computer niche.*

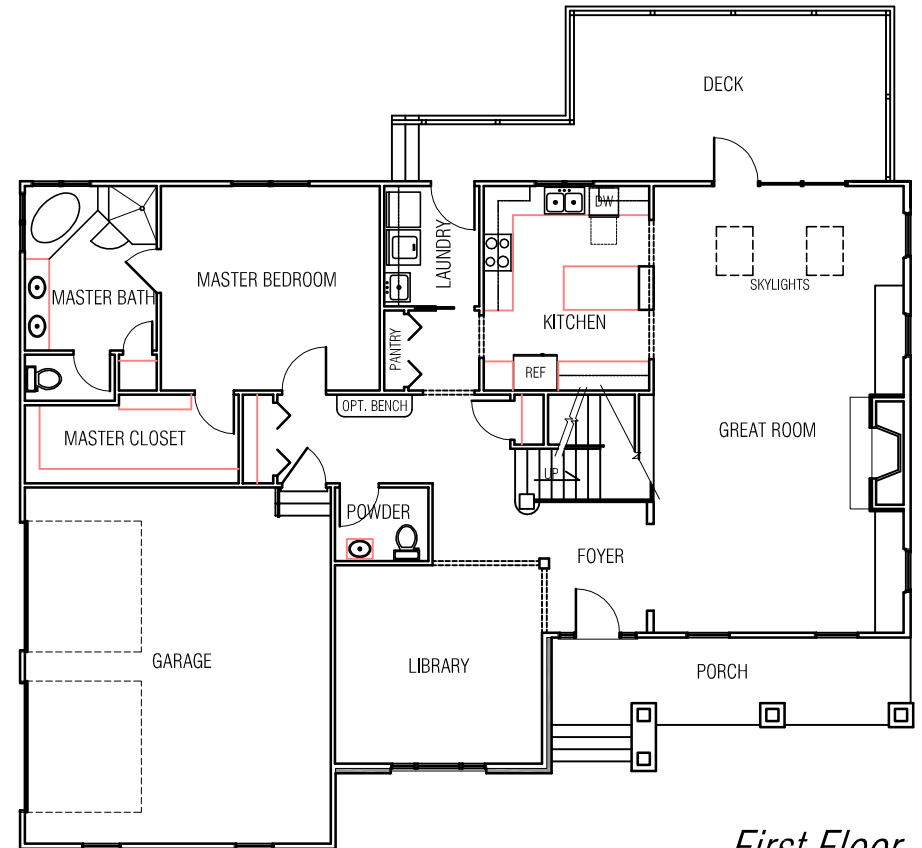


<i>Width</i>	<i>61'-2"</i>
<i>Depth</i>	<i>45'-10"</i>
<i>First Floor</i>	<i>1831 SF</i>
<i>Second Floor</i>	<i>815 SF</i>
<i>Unconditioned Storage</i>	<i>760 SF</i>
<i>Deck</i>	<i>325 SF</i>
<i>Garage</i>	<i>531 SF</i>

Width	61'-2"
Depth	45'-10"
First Floor	1831 SF
Second Floor	815 SF
Unconditioned Storage	760 SF
Deck	325 SF
Garage	531 SF



*Second Floor*



*First Floor*



**CHARLES ROSS HOMES**  
Designers & Builders of Fine Homes

Copyright ©2006 Charles Ross Homes