

Waterford

Conditioned living area: 5,424 SF

An elegant estate home designed for Ford's Colony's Eaglescliffe section.

Features:

The Library/Study with fireplace located off the Foyer is a wonderful place to welcome guests.

The Kitchen's two islands provide ample workspace for multiple chefs. The adjoining Keeping Room allows guests to socialize without interfering with meal preparation.

The Master Suite includes generous his and her walk-in closets.

The 2-story Great Room features a beamed ceiling.

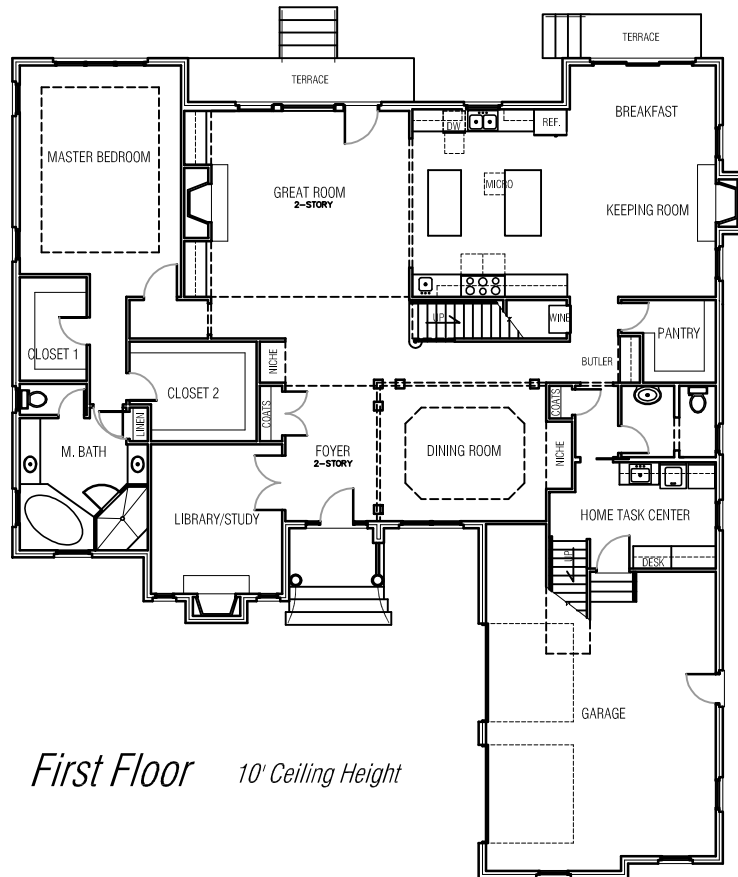
The Loft overlooking the Great Room offers wonderful interior and exterior views.

The large Home Task Center is a convenient place for laundry, crafts, and home administrative tasks.

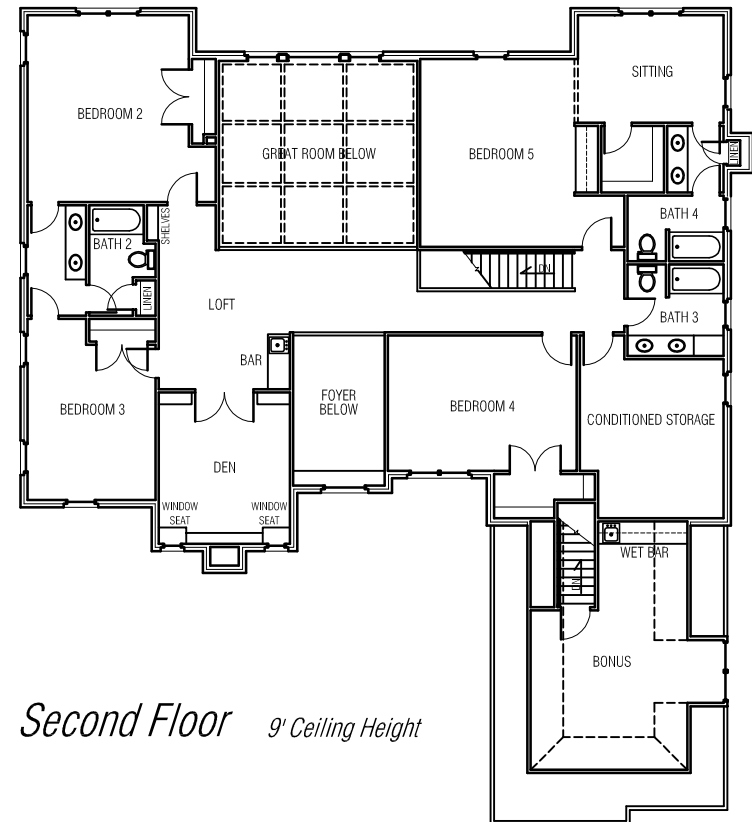


CHARLES ROSS HOMES
Designers & Builders of Fine Homes

Width	65'-0"
Depth	75'-0"
First Floor	2788 SF
Second Floor	2320 SF
Bonus	316 SF
Garage	614 SF



First Floor 10' Ceiling Height



Second Floor 9' Ceiling Height



CHARLES ROSS HOMES
Designers & Builders of Fine Homes

Width	65'-0"
Depth	75'-0"
First Floor	2788 SF
Second Floor	2320 SF
Bonus	316 SF
Garage	614 SF

Copyright ©2008 Charles Ross Homes